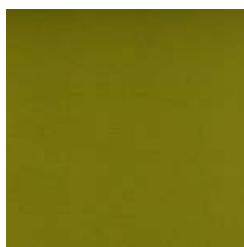


TEMPO



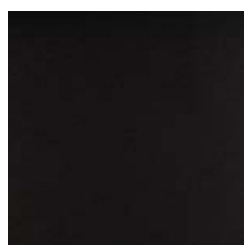
271



273



274



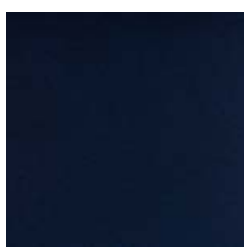
275



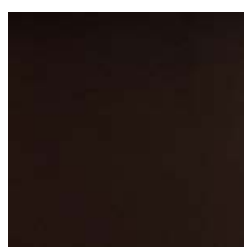
276



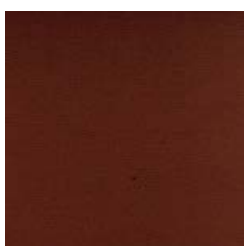
277



278



279



999-SE

TEMPO

EN

Composition: 100% Vinyl
Backing: 100% Polyester
Maintenance: Vacuum regularly, professional Dry-clean or wipe a damp cloth
Abrasion Resistance: 300.000 Martindale cycles
Flammability: EN 1021 part 1&2
NF P92-503 / M2

DE

Zusammensetzung: 100% Vinyl
Rückseite: 100% Polyester
Reinigung: Regelmässig staubsaugen. Professionelle Trockenreinigung
Alternativ dazu mit einem feuchten abwischen
Scheuerfestigkeit: 300.000 Martindale
Feuerschutz: EN 1021 part 1&2
NF P92-503 / M2

FR

Composition: 100% Vinyl
Backing: 100% Polyester
Nettoyage: Aspirer régulièrement. Nettoyage á sec professionnel,
sinon essuyer avec un linge humide
Résistance á l'abrasion: 300.000 cycles Martindale
Normes au feu: EN 1021 part 1&2
NF P92-503 / M2

DK

Materiale: 100% Vinyl
Backing: 100% Polyester
Rengøring: Støvsug regelmæssigt, professionel rens eller tør med en fugtig klud
Slidstyrke: 300.000 Martindale
Flammesikring: EN 1021 part 1&2
NF P92-503 / M2