

NEW TEXTILES

Romo fabrics & Lola velour



HAY

LINARA

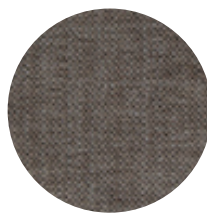
Romo fabrics / 8 colours selected by HAY

Classic Linara is an essential cotton-linen blend with an exceptionally soft, peach skin finish.

Linara classique est un mélange essentiel de coton et de lin avec une finition peau de pêche exceptionnellement douce.



198



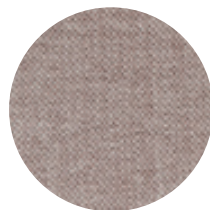
196



443



311



103



415



142



216

Composition 63% CO 37% LI

Note: Due to variations in computer screens, we cannot guarantee that colours shown here are truly representative of our products.

HAY

LINARA



New Order, Tulou Coffee Table &
Mags Soft Low / Linara 216

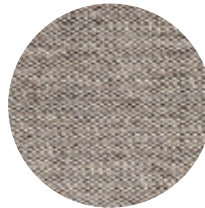
HAY

RUSKIN

Romo fabrics / 4 colours selected by HAY

A blend of viscose, linen and wool creates a beautiful movement of colour and gives the fabric its textured appearance.

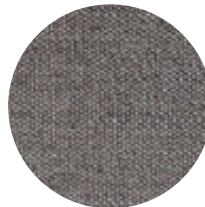
Un mélange de viscose, de lin et de laine crée un beau mouvement de couleur et donne au tissu son aspect texturé.



33



05



12



11

Composition 70% VI 15% LI 10% WO 5% PA

Note: Due to variations in computer screens, we cannot guarantee that colours shown here are truly representative of our products.

HAY

RUSKIN



Mags lounge
Ruskin 33



About A Lounge AAL82
Ruskin 11 / Black stained solid oak base

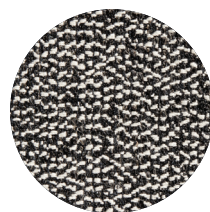
HAY

OLAVI

Romo fabrics / 1 colour selected by HAY

A beautiful, textural semi-plain with an irregular weave structure and understated appearance, available in a range of contemporary shades.

Un beau semi-uni texturé avec une structure de tissage irrégulier et un aspect discret, disponible dans une gamme de nuances contemporaines.



03

Composition 45% VI 36% CO 15% PC 4% LI

Note: Due to variations in computer screens, we cannot guarantee that colours shown here are truly representative of our products.

HAY

OLAVI



Tray Table & AAL Sofa
Olavi 03 / Black stained solid oak base

HAY

RODEN

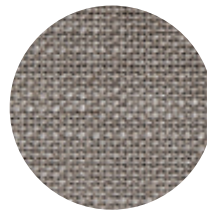
Romo fabrics / 4 colours selected by HAY

A textural viscose linen with a subtle sheen and wonderful natural appearance.

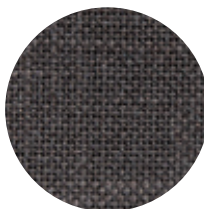
Un lin texturé en viscose aux reflets subtils et magnifique aspect naturel



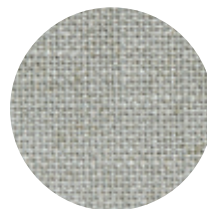
04



05



06



08

Composition 55% VI 24% LI 10% CO 8% PL 3% PA

Note: Due to variations in computer screens, we cannot guarantee that colours shown here are truly representative of our products.

HAY

LOLA VELOUR

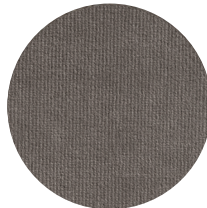
Selected by HAY

Velour's rich short, dense pile creates a soft appearance and feel.

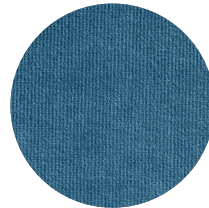
Le velours riche et court de Velour crée un aspect et un toucher doux.



Beige



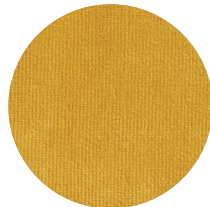
Warm Grey



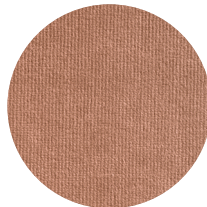
Blue



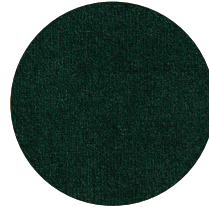
Navy



Yellow



Rose



Dark Green



Moss

Composition 82% CO, 9% CMD, 9% PES

Note: Due to variations in computer screens, we cannot guarantee that colours shown here are truly representative of our products.

HAY

LOLA VELOUR



About A Chair AAC23
Lola navy / Soaped oak base

HAY