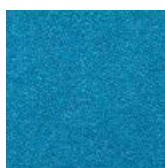
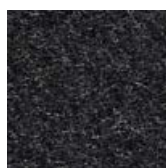


## FELT MELANGE



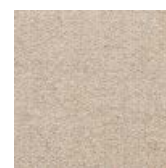
582



610



612



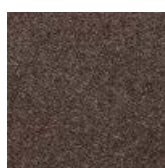
619



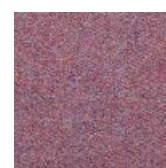
620



623



635



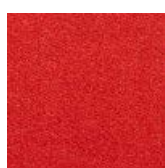
640



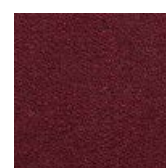
641



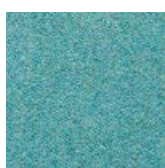
642



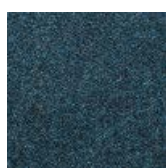
650



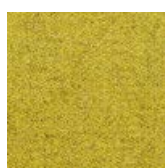
651



652



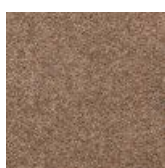
846



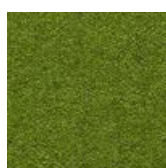
847



848



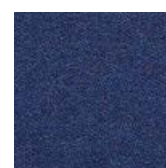
849



855



858



859

## FELT MELANGE

### EN

Composition: 70% Wool, 25% Polyamide, 3% Acrylic, 2% Polyester  
Maintenance: Vacuum regularly or professional Dry-clean  
Abrasion Resistance: 90.000 Martindale cycles  
Flammability: EN 1021 part 1&2  
BS 5852-1: 1979

### DE

Zusammensetzung: 70% Wolle, 25% Polyamid, 3% Akryl, 2% Polyester  
Reinigung: Regelmässig staubsaugen. Professionelle Trockenreinigung  
Scheuerfestigkeit: 90.000 Martindale  
Feuerschutz: EN 1021 part 1&2  
BS 5852-1: 1979

### FR

Composition: 70% Laine, 25% Polyamide, 3% Acryl, 2% Polyester  
Nettoyage: Aspirer régulièrement. Nettoyage à sec professionnel  
Résistance à l'abrasion: 90.000 cycles Martindale  
Normes au feu: EN 1021 source d'ignition 1&2  
BS 5852-1: 1979

### DK

Materiale: 70% Uld, 25% Polyamide, 3% Akryl, 2% Polyester  
Rengøring: Støvsug regelmæssigt eller professionel rens  
Slidstyrke: 90.000 Martindale  
Flammesikring: EN 1021 part 1&2  
BS 5852-1: 1979