

# GRIFFON

**SOFT  
LINE**



501



502



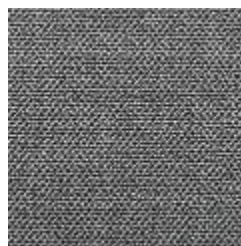
503



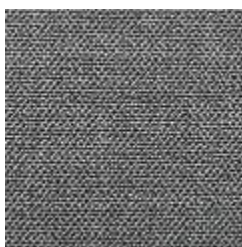
504



505



506



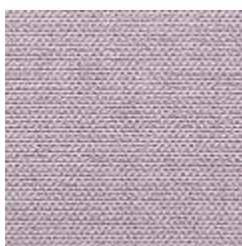
507



830



995-FE



995-FF



995-TD



995-TE



995-TH

**SOFTLINE A/S**  
Kidnakken 7  
DK-4930 Maribo  
Denmark  
Tel.+4554160680  
info@softline.dk  
SOFTLINE.DK

## GRIFFON

### EN

Composition: 62% Poly Acrylic, 27% Polyester, 11% Polypropylene  
Maintenance: Vacuum regularly or professional Dry-clean  
Abrasion Resistance: 30.000 Martindale cycles

### DE

Zusammensetzung: 62% Poly Acryl, 27% Polyester, 11% Polypropylene  
Reinigung: Regelmässig staubsaugen. Professionelle Trockenreinigung  
Scheuerfestigkeit: 30.000 Martindale

### FR

Composition: 62% Poly Acrylique, 27% Polyester, 11% Polypropylène  
Nettoyage: Aspirer régulièrement. Nettoyage á sec professionnel  
Résistance á l'abrasion: 30.000 cycles Martindale

### DK

Materiale: 62% Poly akrylc, 27% Polyester, 11% Polypropylene  
Rengøring: Støvsug regelmæssigt eller professionel rens  
Slidstyrke: 30.000 Martindale