

Todus



LOTOS MODULAR SOFA



LOTOS MODULAR SOFA
BY JIŘÍ ŠPANIHEL

CREATE
YOUR OWN
DESIGN



LOTOS
OTTOMAN
[80 x 80 x 35 cm]



LOTOS
CENTRE UNIT
[80 x 100 x 65 cm]



LOTOS
CORNER UNIT
[100 x 100 x 65 cm]



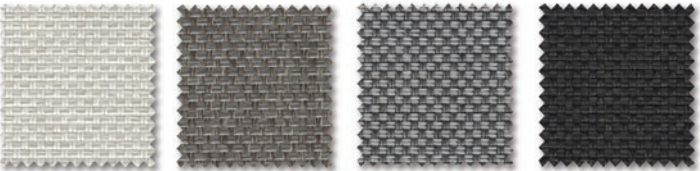
LOTOS
CLUB CHAIR
[120 x 100 x 65 cm]



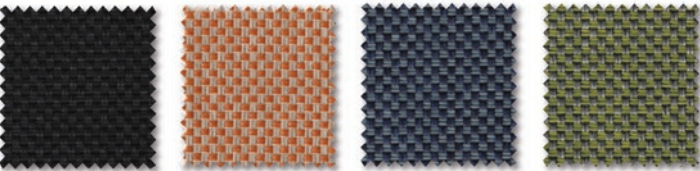
MATERIALS

FABRICS - CREVIN

Crevin is a unique upholstery fabric for joint indoor outdoor use. It has a homely and natural appearance and can be easily cleaned by domestic machine-wash. It is finished with stain repellence. Sofa cushions are filled with Dryfeel® all weather foam.



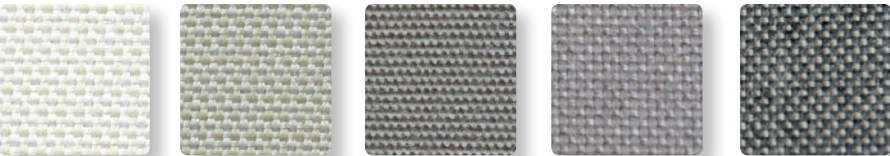
WHITE 410 BROWN GREY 427 GREY 435 ANTHRACITE 445



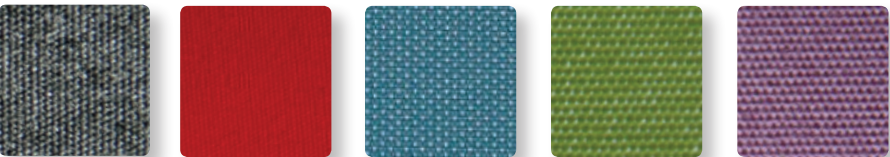
BLACK 450 ORANGE 424 DARK BLUE 479 GREEN 480

FABRICS - SUNBRELLA®

Sunbrella® is a fabric made of solution dyed acrylic. It is water repellent and stain resistant. It has a soft natural feel and touch. Sofa cushions are filled with Dryfeel® all weather foam.



WHITE 610 WHITE CREAM 612 TAUPE 617 NATURE GREY 632 ANTHRACITE 645



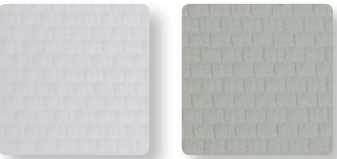
CARBON 647 RED 670 BLUE 675 GREEN 680 VIOLET 685



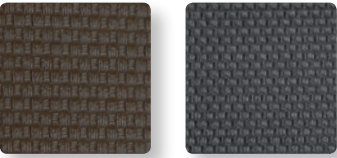
DECO CUSHIONS
[40 x 40 cm]
[40 x 60 cm]
[60 x 60 cm]

VINYL

SKAI® vinyl simulated leather on PVC base. It is UV and water resistant.



WHITE 710 LIGHT GREY 711



CHOCO 720 BLACK 750



PURO
COFFEE TABLE
[90 x 90 x 29 cm]
[100 x 50 x 29 cm]
[110 x 70 x 29 cm]

CERAMIC TABLE TOPS

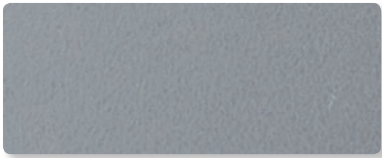
Ceramic is a 100% natural product. It does not contain any organic pigments and is thus resistant to UV rays, so it's perfectly colour stable. Ceramic as a material is highly abrasion resistant.



WHITE 210



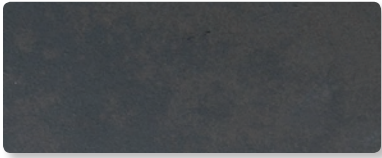
PEARL 212



FUME 214



ANTHRACITE STONE 217



OXIDO BLACK 218



STONE IVORY 211



PEARL STONE 213



GREY STONE 215



BLACK 216

HPL TABLE TOPS

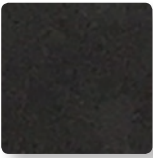
High pressure laminate (HPL) is a flat thermo hardening resin-based sheet. It is reinforced with wood-based fibers and manufactured at high pressure and temperature.



WHITE 310



GREY 335



DARK GREY 336