

# PER/USE



**ELEPHANT**  
CHAIR / Charly Cnops



# ELEPHANT

The ELEPHANT is a collection of chairs designed by Studio SPONC - Charly Cnops (B).

The name of the ELEPHANT chair refers to the animal with its characteristic shape of trunk and ears. The continuous line of the tubular metal frame gives the ELEPHANT a contemporary and playful look. The separate seat and back rest work as two independent pieces and result in a comfortable and relaxed sitting.

The ELEPHANT chair is now available with black or white mat metal base and oak or walnut seating and back rest.

The base of the ELEPHANT chair is made out of 1 metal tube, bended to serve as the floor base and to connect the wood parts for seating and back rest. The bent tubular steel frame is powder coated in mat black or white, giving it its iconic look

The wooden parts for the seat and back of the ELEPHANT are made out of plywood with oak or walnut veneer, natural oiled. Combined with the metal base this offers sufficient rigidity and at the same time good resilience.

The ELEPHANT chair has a seating height at 47 cm (total height of 72 cm) and is 48cm wide.

This striking chair will definitely attract some attention in your home, in the kitchen, dining or work area.



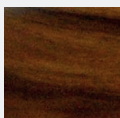
## Dimensions (approx.)

	(NET)	(PACKED)
L (cm)	56	60
H (cm)	80	90
B (cm)	48	60
W (kg)	12	15

### SEAT & BACK



**OAK**  
natural oiled

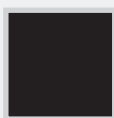


**WALNUT**  
natural oiled

### METAL BASE



**WHITE**



**BLACK**

**FINISHES:** Seat and back Oak natural oiled, Walnut natural oiled, Metal base White (RAL 9010), Black (RAL 9005)

Actual colors can differ from sample. For further technical details and maintenance please refer to the user manual