

PER/USE



CHAMFER

LIGHTS / Charly Cnops & David Braeckman



CHAMFER

The CHAMFER is a collection of lights, designed by Studio SPONC - Charly Cnops and Ministry of Mass - David Braeckman (B).

The CHAMFER lights explore the contrast between natural materials and metal using advanced LED technology, resulting in functional objects with precise detailing and high quality finish.

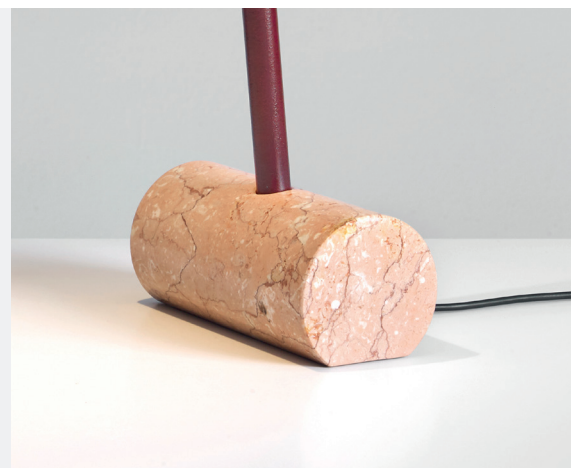
The CHAMFER collection embodies the designer's contemporary take on light, by redefining a lamp down to its most elemental form using a solid base, in wood or marble, and a minimal metal body.

The sleek and minimalist design of the CHAMFER combines the art of natural materials with the craft of bended metal for the light holder.

The base of the CHAMFER lamp is made of a solid block of wood (oak, ash or walnut) or natural stone (such as calacatta, or travertino rosso marbles).

The body of the CHAMFER is a hand-cranked aluminum cylinder with a high quality powder-coated finish. The light itself is provided by an integrated symmetrical form with the latest LED technology.

The CHAMFER is now available as a standing desk lamp.



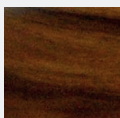
Dimensions (approx.)

	(NET)	(PACKED)
B (cm)	14	20
H (cm)	45	50
W (kg)	7-14	9-20

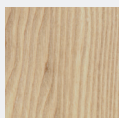
WOOD BASE



OAK
natural oiled

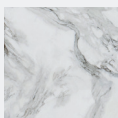


WALNUT
natural oiled

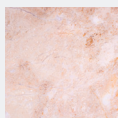


ASH
natural oiled

MARBLE BASE



CALACATTA



TRAVERTINO
ROSSO

FINISHES: WOOD: Oak natural oiled, Walnut natural oiled, Ash natural oiled. MARBLE: Calacatta, Travertino rosso.

Actual colors can differ from sample. For further technical details and maintenance please refer to the user manual