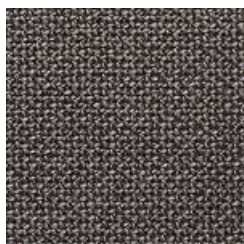
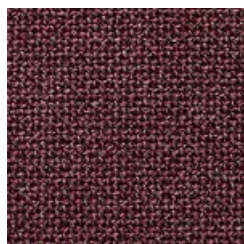


NORDIC



480



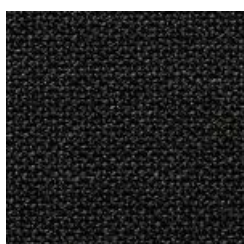
481



482



483



484



485

NORDIC

EN

Composition: 38% Cotton, 24% Acrylic, 18% Viscose, 12% Wool, 6% Polyester, 2% Polyamid
Maintenance: Vacuum regularly or professional Dry-clean
Abrasion Resistance: 62.000 Martindale cycles
Flammability: EN 1021 part 1&2

DE

Zusammensetzung: 38% Baumwolle, 24% Akryl, 18% Viscose, 12% Wolle, 6% Polyester, 2%
Polyamid Reinigung: Regelmässig staubsaugen. Professionelle Trockenreinigung
Scheuerfestigkeit: 62.000 Martindale
Feuerschutz: EN 1021 part 1&2

FR

Composition: 38% Coton, 24% Acryl, 18% Viscose, 12% Laine, 6% Polyester, 2% Polyamid
Nettoyage: Aspirer régulièrement. Nettoyage à sec professionnel
Résistance à l'abrasion: 62.000 cycles Martindale
Normes au feu: EN 1021 part 1&2

DK

Materiale: 38% Bomuld, 24% Akryl, 18% Viscose, 12% Uld, 6% Polyester, 2% Polyamid
Rengøring: Støvsug regelmæssigt eller professionel rens
Slidstyrke: 62.000 Martindale
Flammesikring: EN 1021 part 1&2